

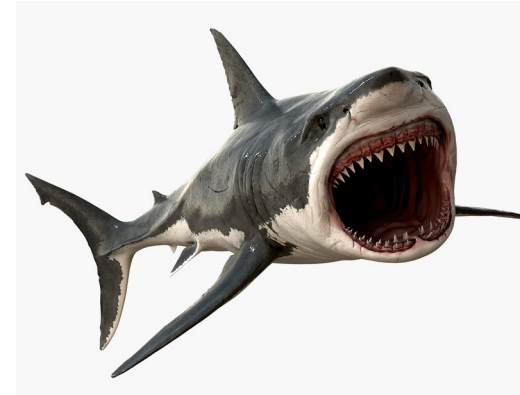
ELEMENTS DISTINGUISHING REALISTIC AND COMIC CHARACTERS



Southern California Regional Occupational Center

REALISTIC

- Closely resembles the actual anatomical structure of the base animal
- Surface qualities are mimicked - scales, fur, etc.



COMIC

- Character often assumes human like characteristics
 - Postures - four legged animal (quadrupeds) assume a two legged stance.
 - Animals head is merely placed atop a human body (satirical comic)
- Head is enlarged to suggest infant proportions (cute comic)
- Body parts are simplified (fewer fingers and toes)
- Body parts are proportioned as opposites (big body/little head, Long neck/short legs)

