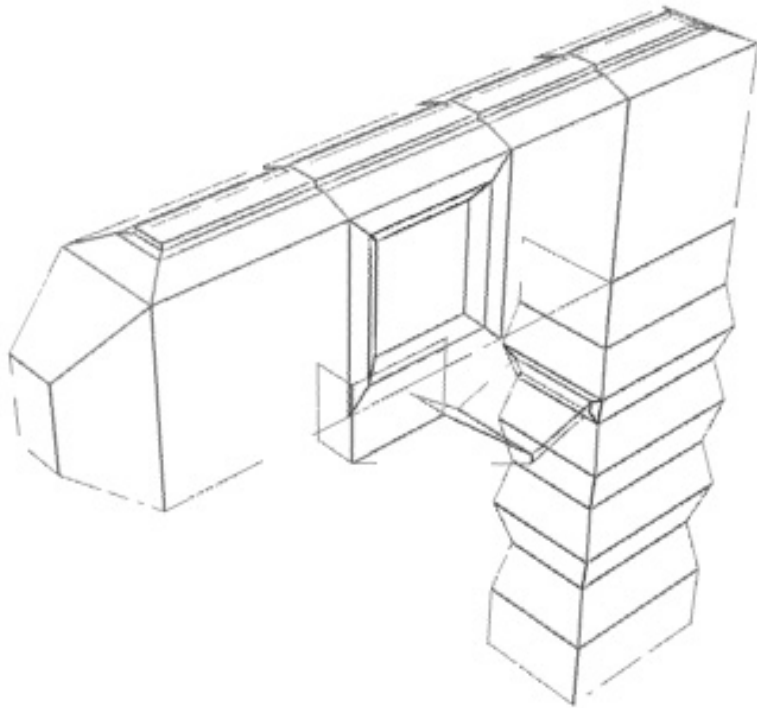
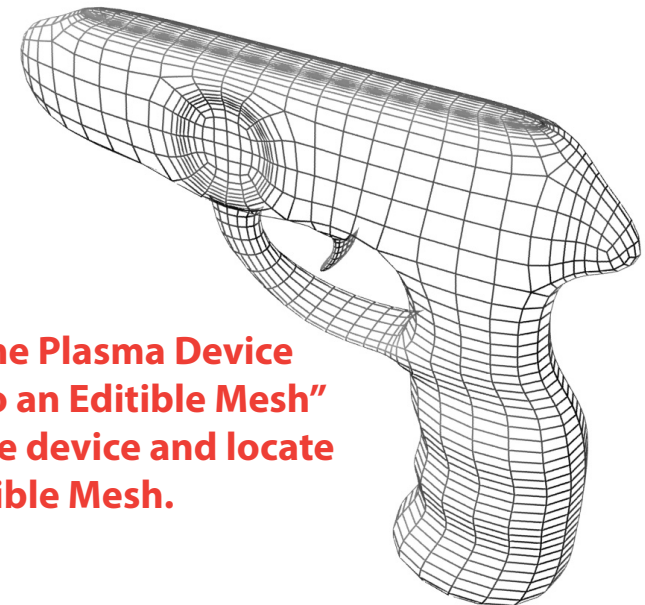


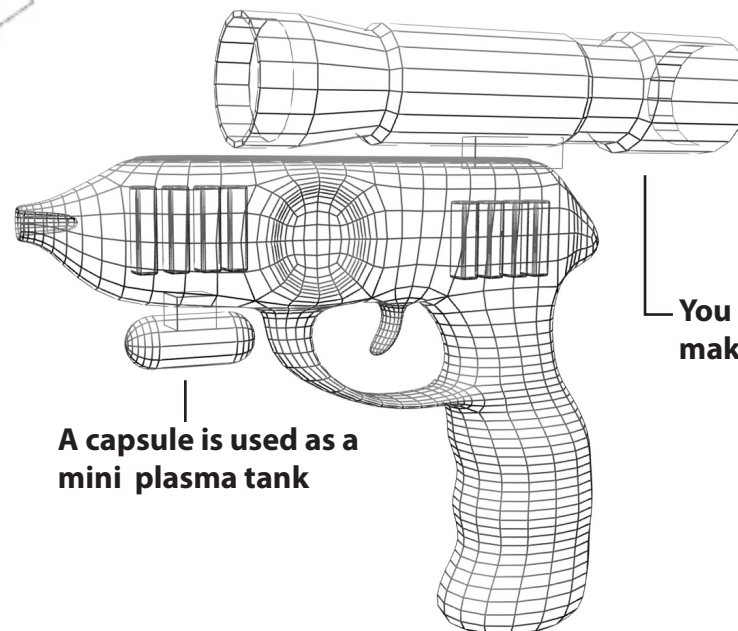
The basic form of the Plasma device is complete. The details are made using the same processes (Extrude, Bevel, Inset, Bridge) and primitives and extended primitives. Last, place the "TurboSmooth" modifier on top of the stack and the device is smoothed.



NOTE: After Completing the Plasma Device make sure to "Convert it to an Editable Mesh" and save. Right click on the device and locate "Convert to:" & select Editable Mesh.



8. Additional elements can be attached to the device (see the illustration right)



A capsule is used as a mini plasma tank

You can box model a "Cylinder" to make a scope.