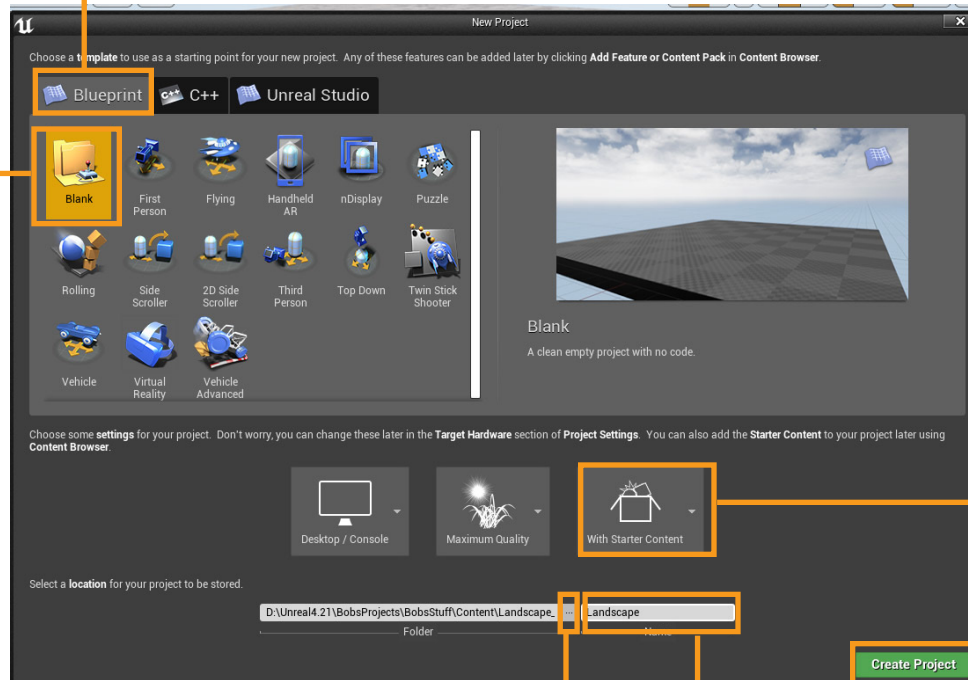


**NOTE: A most common problem with beginners is where to save your work. I recommend using the "H" drive on our system. It is secure and no one else can see your files. You may also use a flash drive as a back-up. Either way keep your files in one place.**

**Don't scatter them across the computer or you'll lose them.**

1. Select "Blueprint"

2. Choose "Blank"



3. Choose "With Starter Content"

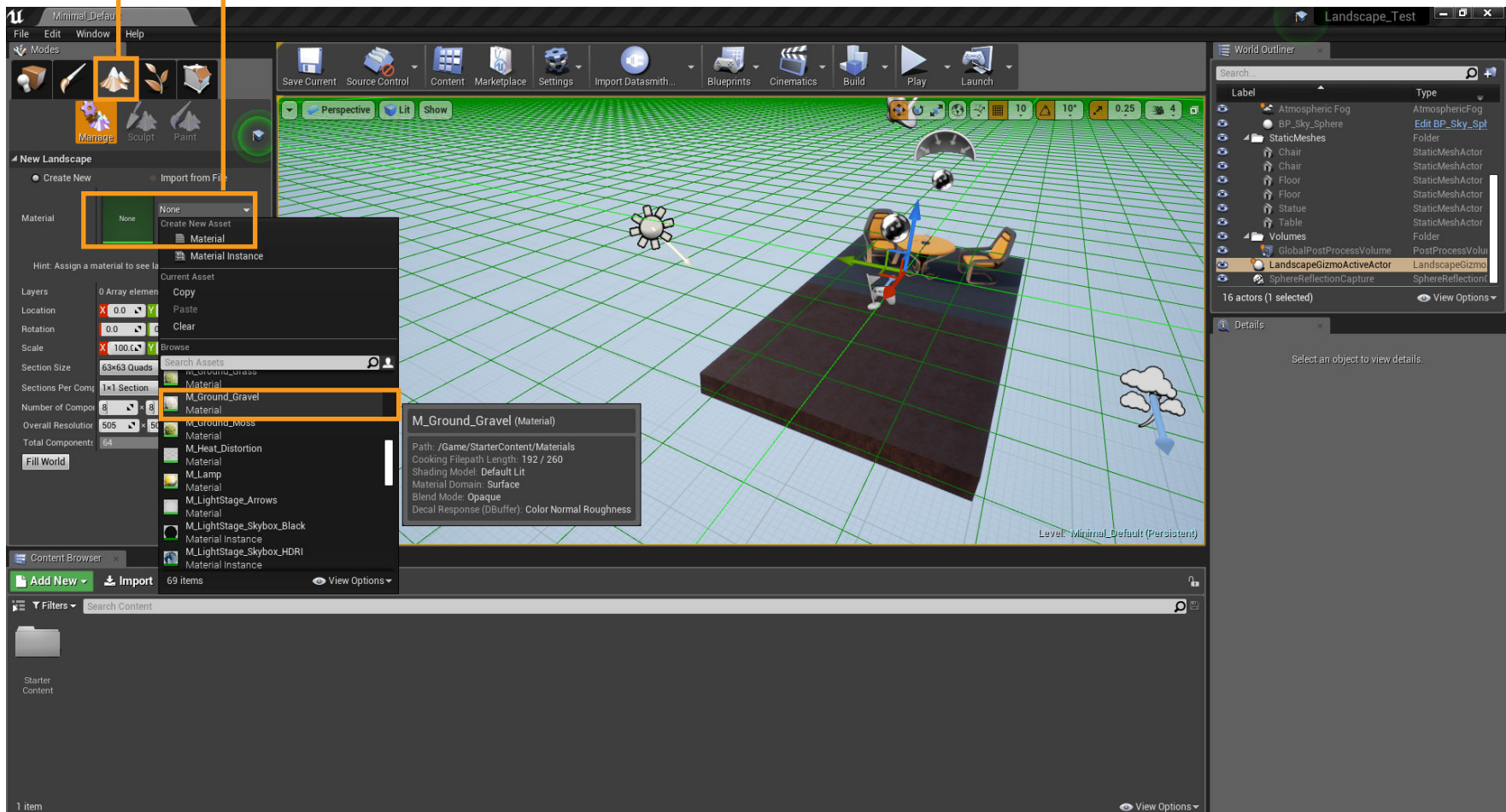
6. Click "Create Project".

4. Click on the three dots.  
Create a folder on the "H" Drive.  
Label the folder with your complete name.

5. Name the project "Landscape".

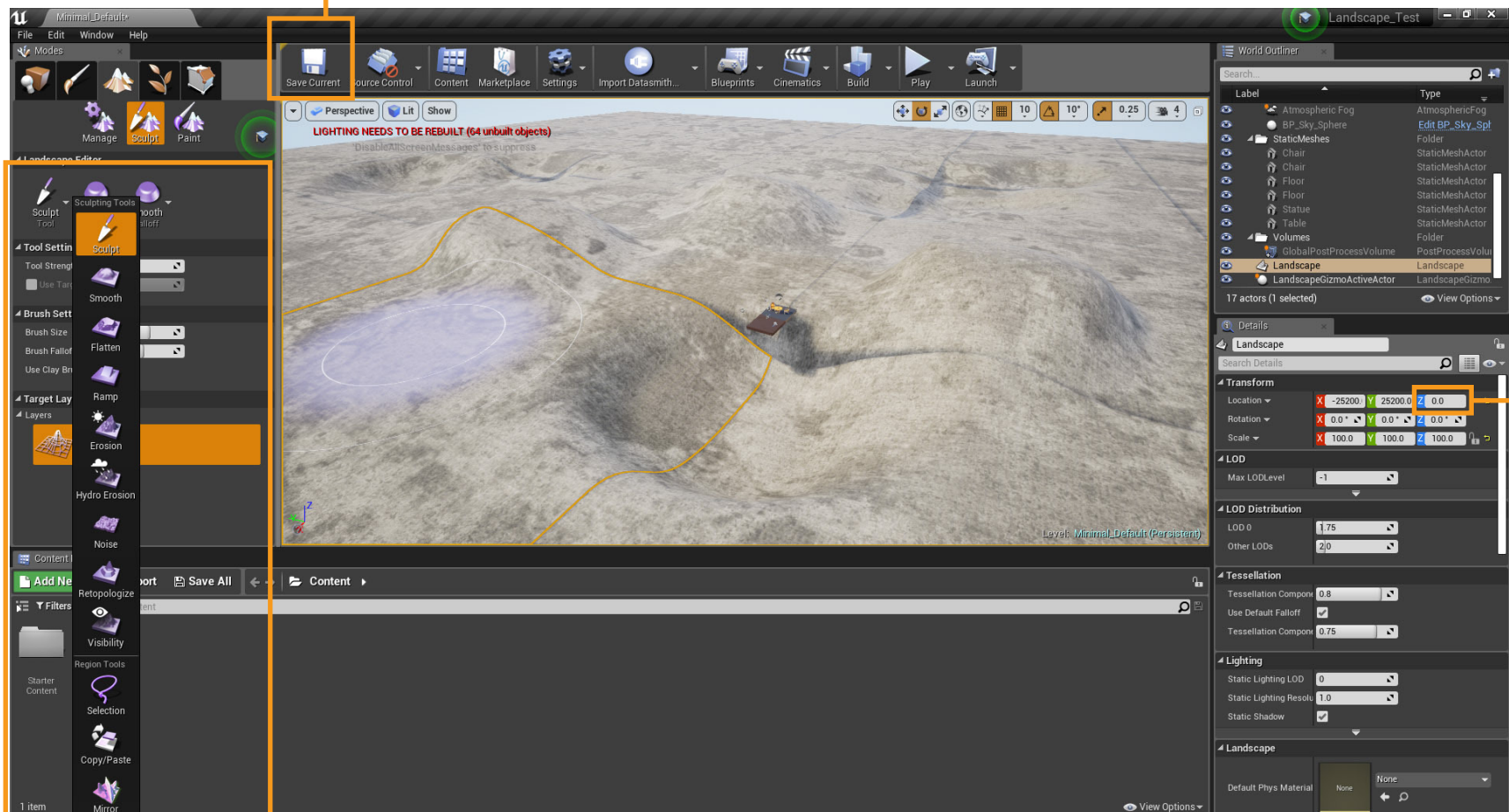
7. Click the "Terrain" button. A green grid appears in your viewport.

8. Next we'll put a material on the grid. I like "Gravel" but you can pick your own. We can always change it later.



**MAKE SURE TO SAVE YOUR LEVEL FREQUENTLY.**

**8. Set the Landscapes location in space at 0.0**



**BRUSH SETTINGS**

**9. Create mountains and valleys with the "Brush". Hold the "Shift" key on your keyboard for making valleys.**