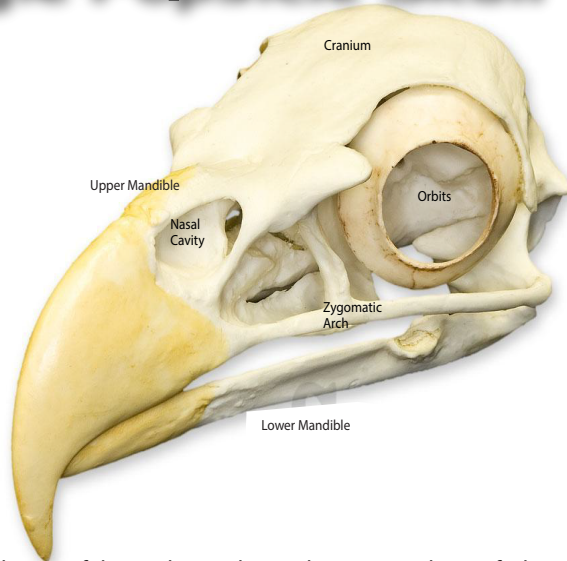


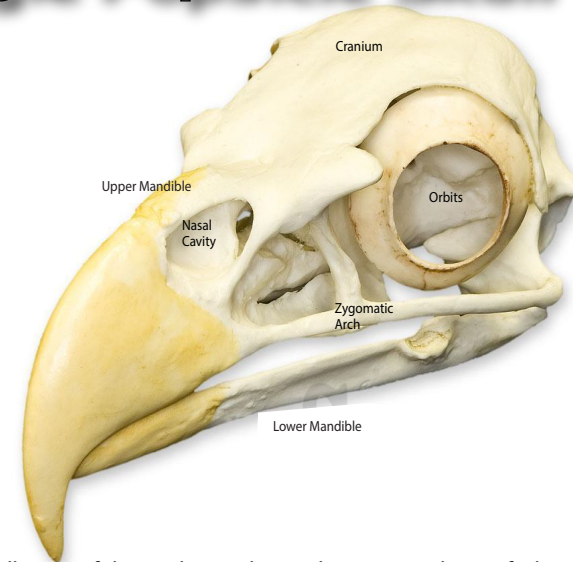
Eagle Popsicle Skull



- Cranium
- Orbits
- Zygomatic arch
- Nasal Cavity
- Upper Mandible
- Lower Mandible

The skull parts of the eagle are almost the same as those of a human. Rather than having a maxilla and a mandible, they have an upper mandible. This is a distinction between birds and mammals.

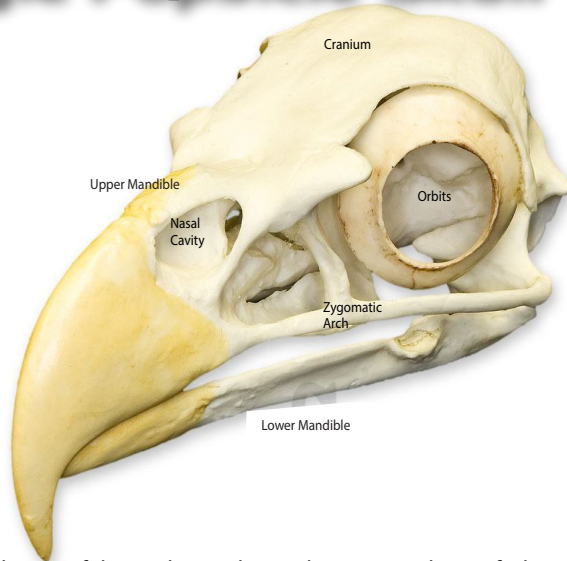
Eagle Popsicle Skull



- Cranium
- Orbits
- Zygomatic arch
- Nasal Cavity
- Upper Mandible
- Lower Mandible

The skull parts of the eagle are almost the same as those of a human. Rather than having a maxilla and a mandible, they have an upper mandible. This is a distinction between birds and mammals.

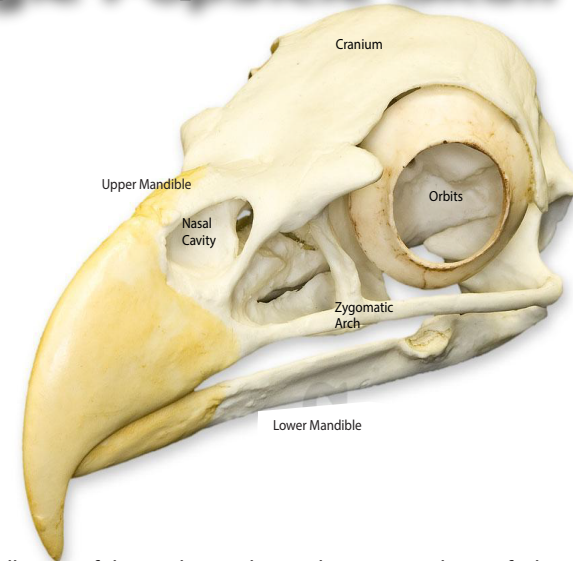
Eagle Popsicle Skull



- Cranium
- Orbits
- Zygomatic arch
- Nasal Cavity
- Upper Mandible
- Lower Mandible

The skull parts of the eagle are almost the same as those of a human. Rather than having a maxilla and a mandible, they have an upper mandible. This is a distinction between birds and mammals.

Eagle Popsicle Skull



- Cranium
- Orbits
- Zygomatic arch
- Nasal Cavity
- Upper Mandible
- Lower Mandible

The skull parts of the eagle are almost the same as those of a human. Rather than having a maxilla and a mandible, they have an upper mandible. This is a distinction between birds and mammals.