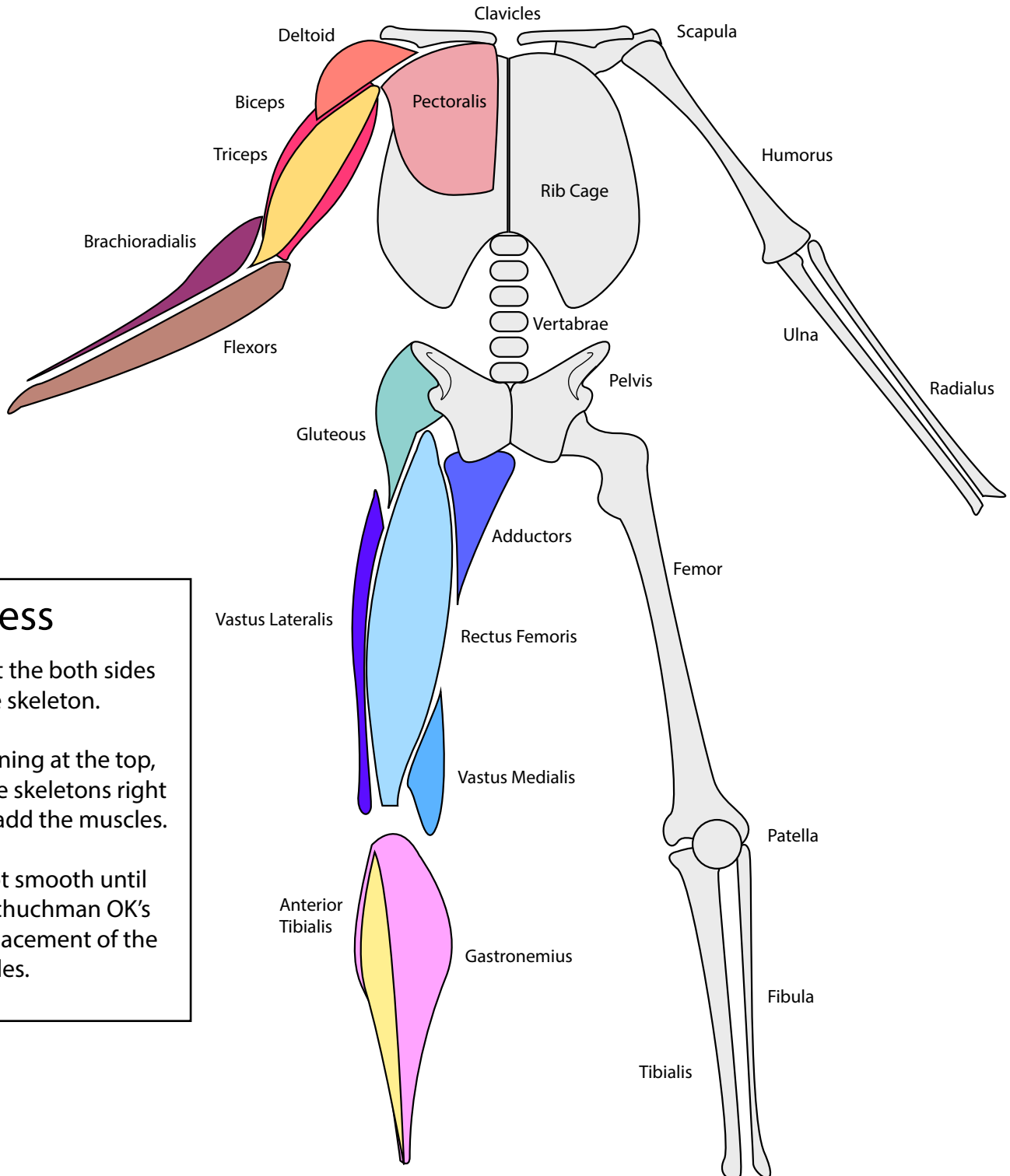


NOTABLE MUSCLE GROUPS & SKELETON - FRONT VIEW

These are the muscle groups and bones that you will indicate on your sculpture.



Process

1. Sculpt the both sides of the skeleton.
2. Beginning at the top, on the skeletons right side, add the muscles.
3. Do not smooth until Mr. Schuchman OK's the placement of the muscles.