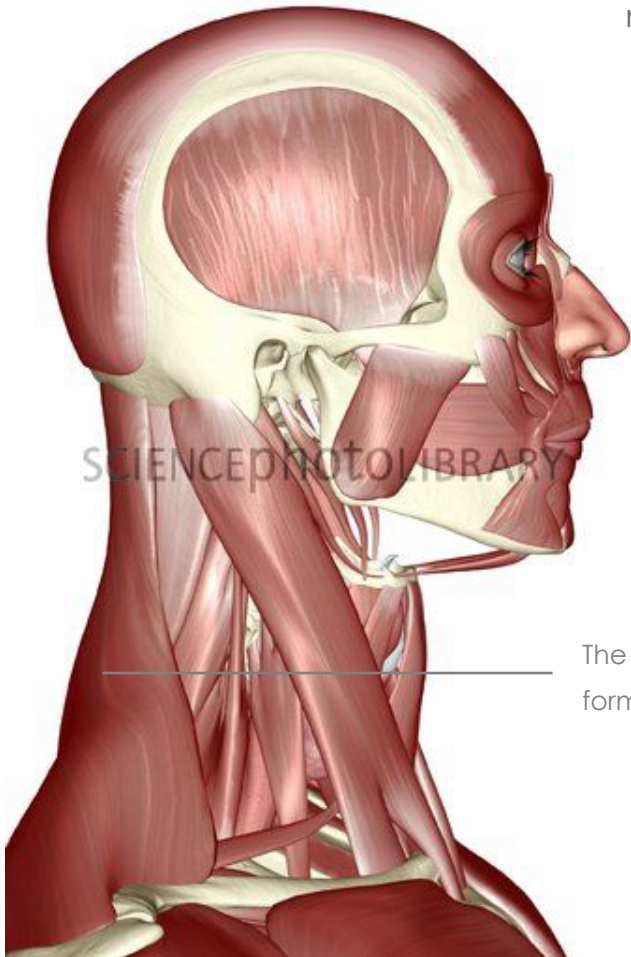


■ Head & Neck

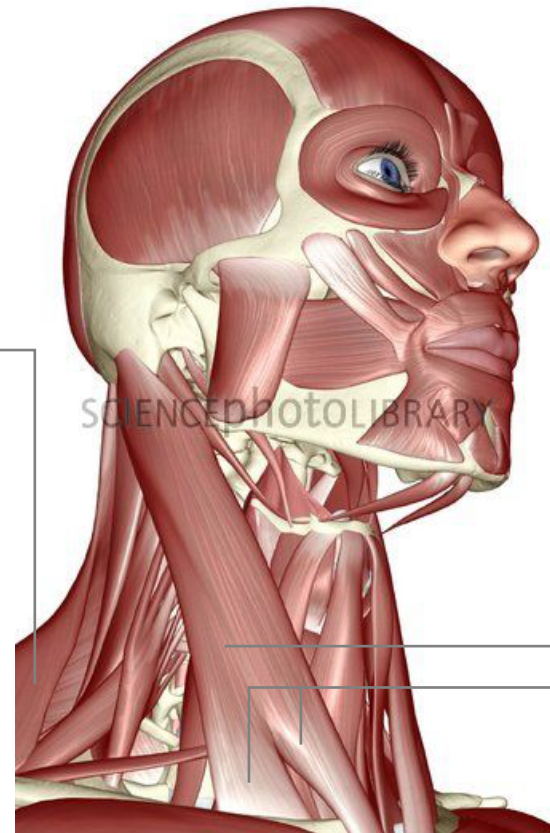
FACIAL ANATOMY

The muscles of the face are known as the “Mimic” muscles: meaning they create facial expressions.

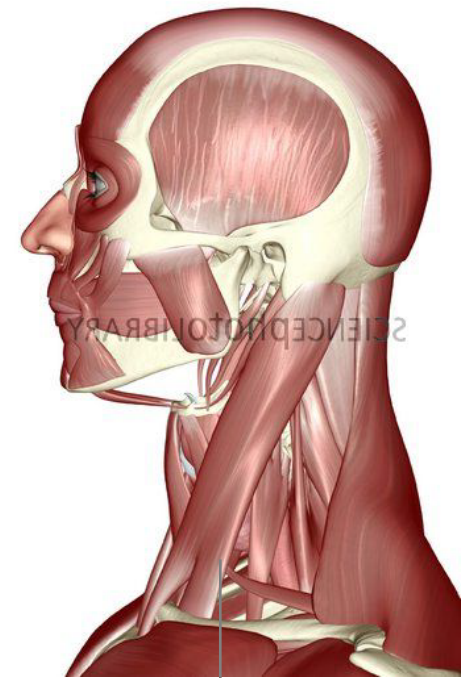
The neck is dominated in the front by the sterno-cleido-mastoid muscle. It begins at the mastoid process on the skull, just behind the ear and then separates into two heads and inserts on the clavicle and sternum.



The back of the neck is formed by the trapezius.



The Sterno-Cleido-Mastoid splits into two heads.



The Front of the neck is formed by the Sterno-Cleido-Mastoid