

Basic PhotoShop Functions & Concepts

Color • Layers • Form • Select/Mask • Painting • Color Mode • DPI

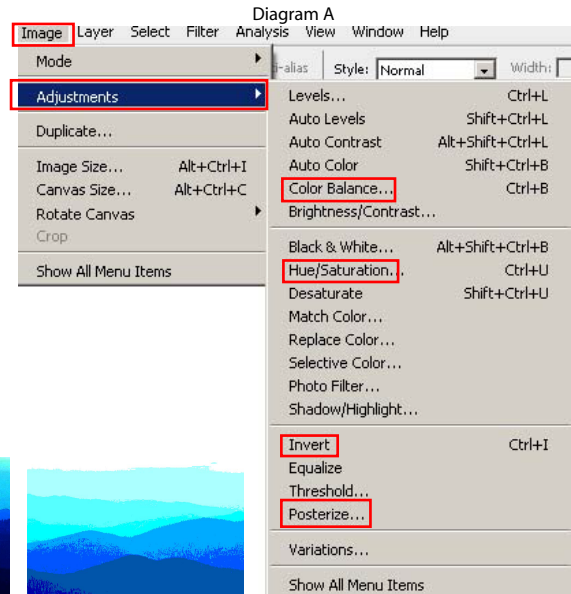
Color Manipulation

Color Manipulation is the control of the three elements of color (Hue, Saturation and Value). PhotoShop manipulates these three elements in **two** primary ways: Adjustment and Blending

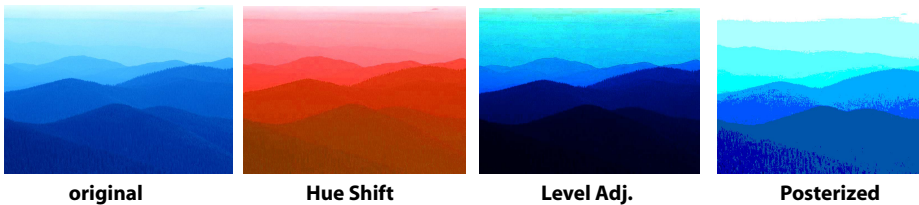
1. Adjustment* - Adjusting colors is done using the various functions on the "Adjustment" sub-panel (see diagram "A").

Those that I use most frequently:

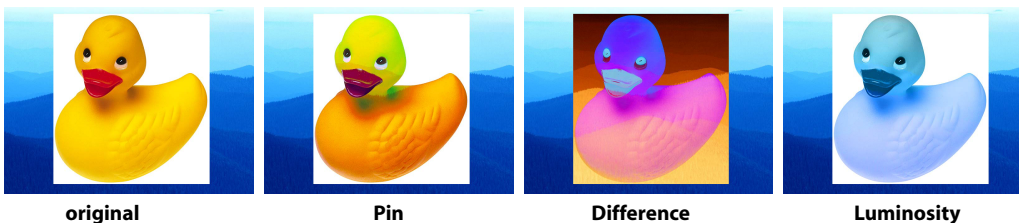
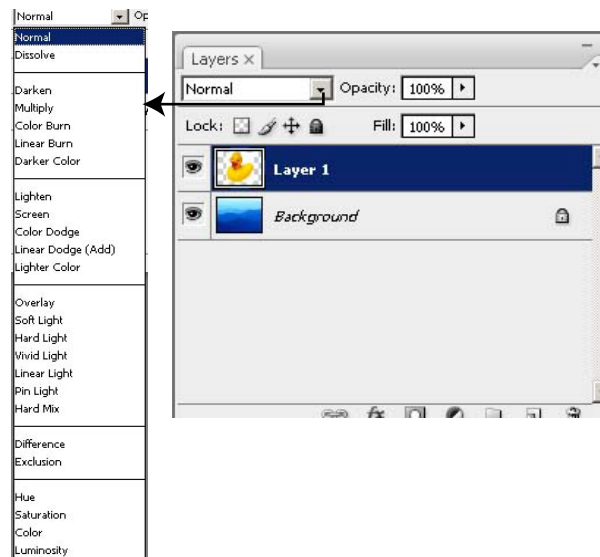
- Levels
- Color Balance
- Hue/Saturation/Value
- Posterize
- Invert



Examples



2. Blending* - Blending requires two or more images in layers (see Diagram "B"). By varying the "Blending Mode", the layers will interact and create a new color effect.



*** These are "KEY" pathway to really important tools**