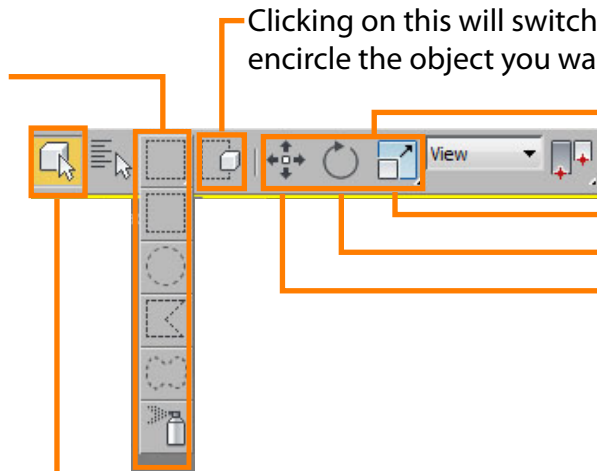


SELECTING & TRANSFORMING

To change an object or sub-object you need to first select it. There are several options for selecting. Once selected, you might transform the object using one of the “Transform” tools.

The default selection setting is a rectangle, but you can drop the menu and change it to a circle, polygon or even a lasso.



Clicking on this will switch between having to completely encircle the object you want to select or partially encircling the object

These three tools are called the “Transforms”:

- Select and Scale
- Select and Rotate
- Select and Move

The transforms do what they are called: move, rotate and scale.

This tool lets you select objects without moving them.