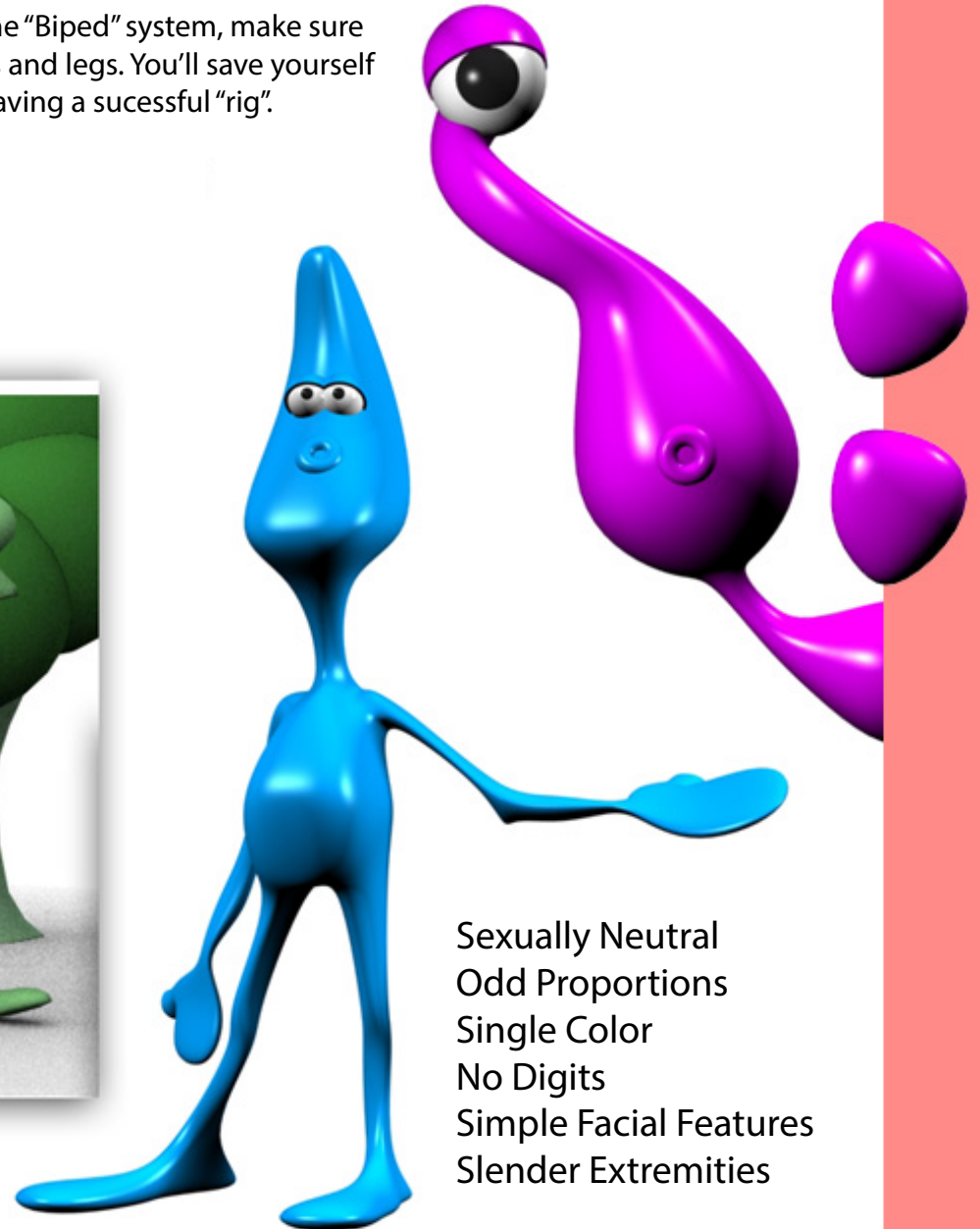
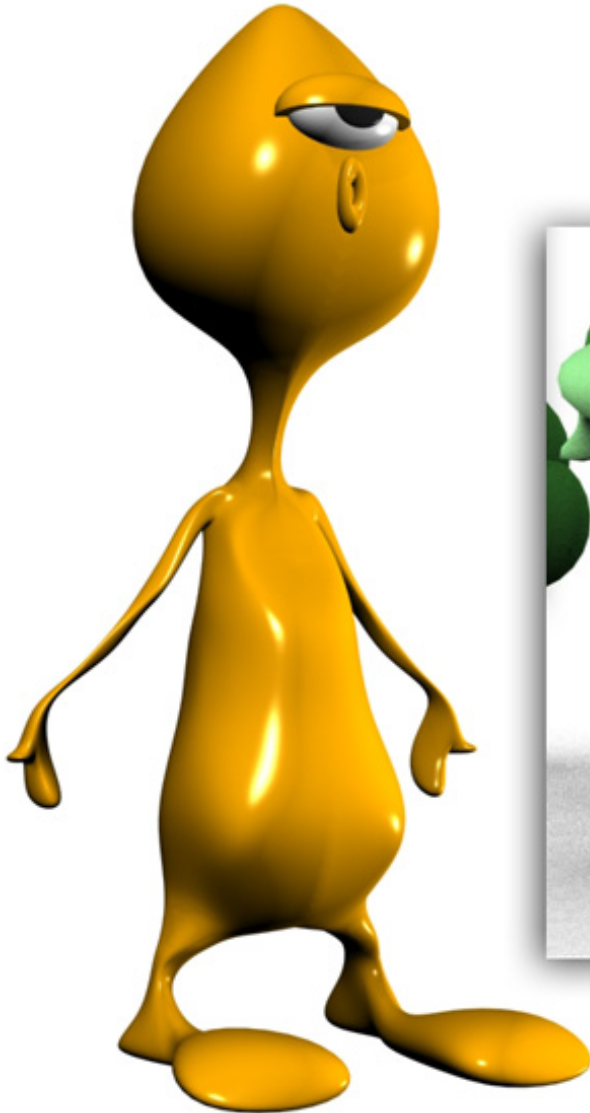


MODELING GOOFY BIPED CHARACTERS

3D CHARACTER DESIGN

Note: If this is one of your first attempts to use the "Biped" system, make sure that you create your character with slender arms and legs. You'll save yourself a lot of problems and increase your chances of having a successful "rig".



Sexually Neutral
Odd Proportions
Single Color
No Digits
Simple Facial Features
Slender Extremities