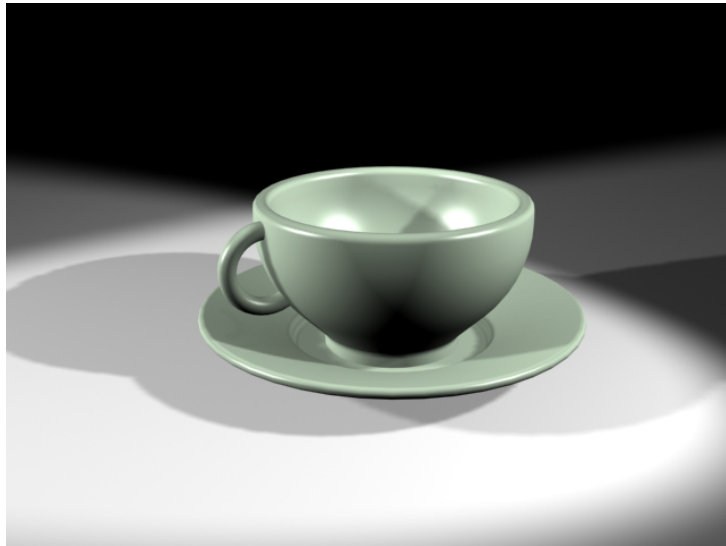


DESCRIPTION OF BEGINNING PROJECTS

Advanced Level
(Point Value - 1 to 5 points)

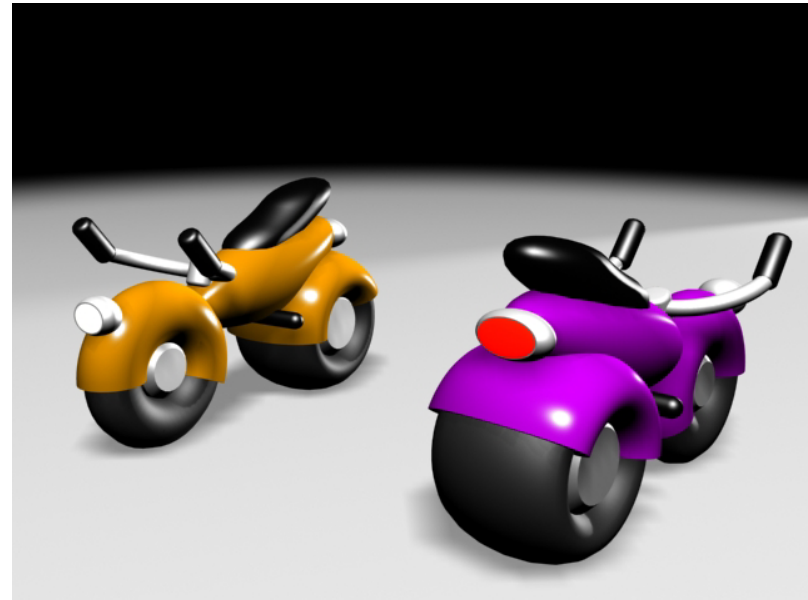
Beginning projects are the place to start if you have never used a 3D program. They help to acquaint you with the basics. They typically use a single modifier and/or simple primitive parameter adjustments.



Cup and Saucer are both made with a Line shape and the Lath modifier.



Extruding a "Text" shape is all you do for the this project.



Concept Motorcycle is all primitives and scale transforms.